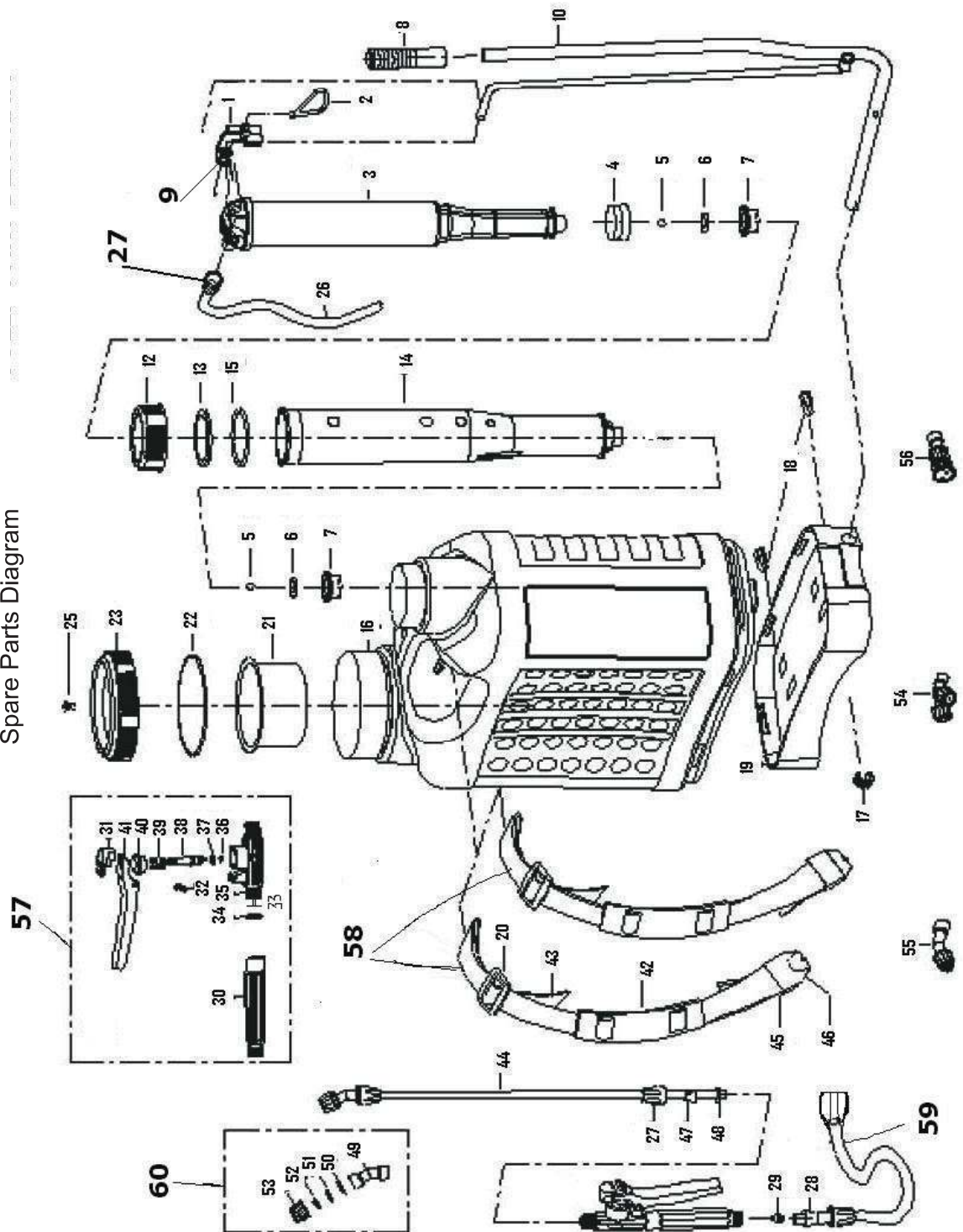


TULIP

Spare Parts Diagram



TULIP NAPSACK SPREYER 16 LTRS

Dia No	Code	Part Description
1	SPAS-000130-1	1 Lance Holder (tulip)
2	SPAS-000130-2	2 Handle Lock(tulip)
3	SPAS-000130-3	3 Air Chamber (Tulip 3)
4	SPAS-000130-4	4 Bowl (Tulip 4)
5	SPAS-000130-5	5 Sealing Ball (Tulip 5)
6	SPAS-000130-6	6 O- Ring 15.5 x 2.5 (Tulip 6)
7	SPAS-000130-7	7 Sealing Ball Seat (Tulip 7)
8	SPAS-000130-8	8 Open Arm Cover (Tulip 8)
9	SPAS-000130-9	9 Lock pin(Tulip)
10	SPAS-000130-10	10 Connecting Rod (Tulip 10)
12	SPAS-000130-12	12 Air Chamber Cover (Tulip 12)
13	SPAS-000130-13	13 Air Tube Sealing Washer (Tulip 13)
14	SPAS-000130-14	14 Air Tube (Tulip 14)
15	SPAS-000130-15	15 O Ring 57 x 3.1 (Tulip 15)
16	SPAS-000130-16	16 Tank x (Tulip)
17	SPAS-000130-17	17 Fixes Buckle (Tulip 17)
18	SPAS-000130-18	18 Fix Pin (Tulip 18)
19	SPAS-000130-19	19 Container Bottom (Tulip 19)
20	SPAS-000130-20	20 Belt Clamp (Tulip 20)
21	SPAS-000130-21	21 Stainer Filler Hole
22	SPAS-000130-22	22 Container Pad (Tulip 22)
23	SPAS-000130-23	23 Container Cap (Tulip 23)
25	SPAS-000130-25	25 Valve (Tulip25)
26	SPAS-000130-26	26 Hose (Tulip 26)
27	SPAS-000130-27	27 Spray Spindle Nut (Tulip 27)
28	SPAS-000130-28	28 Hose Cover (Tulip 28)
29	SPAS-000130-29	29 Ream Cover (Tulip 29)
30	SPAS-000130-30	30 Handle (Tulip 30)
31	SPAS-000130-31	31 Limited Cap (Tulip 31)
32	SPAS-000130-32	32 Switch Pin (Tulip 32)
33	SPAS-000130-33	33 Switch Filter (Tulip 33)
34	SPAS-000130-34	34 Handle Sealing Ring (Tulip 34)
35	SPAS-000130-35	35 Switch Body (Tulip 35)
36	SPAS-000130-36	36 Switch Sealing Pad (Tulip 36)
37	SPAS-000130-37	37 Valve Core O Ring (Tulip 37)
38	SPAS-000130-38	38 Valve Core (Tulip 38)
39	SPAS-000130-39	39 Spring (Tulip 39)
40	SPAS-000130-40	40 Switch Nut (Tulip 40)
41	SPAS-000130-41	41 Press Plate (Tulip 41)
42	SPAS-000130-42	42 Shoulder Cusion
43	SPAS-000130-43	43 Back Belt (Tulip 43)
44	SPAS-000130-44	44 Spray Spindle (Tulip 44)
45	SPAS-000130-45	45 Belt Buckle (Tulip 45)
46	SPAS-000130-46	46 Belt Hook (Tulip 46)
47	SPAS-000130-47	47 Split Sleeve (Tulip 47)
48	SPAS-000130-48	48 Spindle O Ring (Tulip 48)
49	SPAS-000130-49	49 Bend (Tulip 49)
50	SPAS-000130-50	50 Spray Head Sealing Ring (Tulip 50)
51	SPAS-000130-51	51 Separate Plate (Tulip 51)
52	SPAS-000130-52	52 Conical Spray Plate (Tulip 52)
53	SPAS-000130-53	53 Spray Head Nut (Tulip 53)
54	SPAS-000130-54	54 30 Double Spray Head (Tulip 54)
55	SPAS-000130-55	55 Fan Style Spray Head (Tulip 55)
56	SPAS-000130-56	56 4-Hole Adjustable Spray Head (Tulip 56)
57	SPAS-000130-57	57 Tulip Trigger A/y (Tulip 57)
58	SPAS-000130-58	58 Tulip Belt A/y (Tulip 58)
59	SPAS-000130-59	59 Hose Ass'y (Tulip 59)
60	SPAS-000130-60	60 Hollow Cone Spray Head (60 Tulip)